

Moxa Floss

produced by  株式会社 山正 Yamasho Co., Ltd.

Direct Moxibustion

We offer four different types for direct moxibustion, ranging from top to medium quality. Finer moxa floss is characterized by fewer impurities, which increase in amount with lower-grade moxa floss.

📦 100g / box 📦 200g / box



Gold Mountain Moxa

HIGHEST QUALITY

Super-pure, extra fine texture make this the highest quality moxa floss available. Excellent for direct moxibustion. Less likely to burn the skin.



Daigokuju

FINE



Fukuju

MEDIUM



Yomei

ORDINARY

Warm Needling Moxibustion

We offer four different types for warm needling moxibustion to allow you to choose the product best suited for the intended use. The combustion temperature differs depending on thickness and length of the needles used, and the treatment duration.

📦 300g / box 📦 1kg / box 📦 3kg / box



Wakakusa Moxa

MEDIUM

Wakakusa is the choice moxa floss for use in warm needling moxibustion. Excellent adhesiveness with no stems. Its heat and easy lighting make it ideal for applying to acupuncture needles.



Unryu

FINE



Gekko

ORDINARY



Myojo

ORDINARY

Indirect Moxibustion

📦 300g / bag 📦 3kg / box



Gokujo Moxa

FINE



Nami Moxa

ORDINARY

Moxa floss made in China

📦 2kg / box 📦 5kg / box



Chang'an No.1



Chang'an No.2



Chang'an Ko



Chang'an Otsu

Moxa Floss

produced by  株式会社 山正 Yamasho Co., Ltd.



Yuki-no-hana

30g / box

PREMIUM QUALITY MOXA FLOSS



The best quality of moxa floss ever for direct moxibustion. Even better quality than Gold Mountain Moxa, our most famous product. Superb texture and fragrance. Comes with incense sticks.



Red Box (Gold Mountain Moxa)

MOXA FLOSS IN SMALL POTION



10g / box



Yellow Box (Fukuju)

MOXA FLOSS IN SMALL POTION



10g / box



Moxa Bulk

500pcs / box



For use in warm needling moxibustion. Bulk packing makes it economical. Two sizes are available. Moxa pieces are pierced and ready-to-use.

size L: 12mmφ×15mm length / each piece
size S: 10mmφ×10mm length / each piece



L



S



New Moxa Stick

10pcs / box



Tataki-mogusa

4g / bag



Stick-on Moxa

produced by  YAMASHO

株式会社 山正

Yamasho Co., Ltd.



Chosei-kyu Moxa

200pcs / box 1000pcs / box

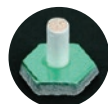


Chosei-kyu is not burned directly on the skin surface but is raised above it so that its heat gives adequate stimulation. Chosei-kyu's moxa burns evenly from top to bottom thus insuring a gradual heat builds up that will not discomfort the skin. Each piece is self-adhesive and will hold firmly to skin. Simply remove from adhesive backing by pressing on reverse side with finger. 50 pieces arranged on self-adhesive backing.

- 4 CHOICES -



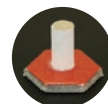
"SOFT"(least heat)



"LIGHT"(less heat)



"REGULAR"

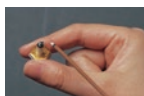


"HARD"(more heat)

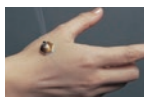
- How to use -



1. Remove individual moxa pieces by pushing reverse side with finger.



2. Light moxa.



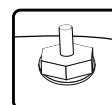
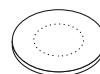
3. Apply to acupoints or painful areas.



Heat regulating paper for Chosei-kyu Moxa

132pcs / box

Allows to decrease the heat level of Chosei-kyu moxa by applying on the skin.



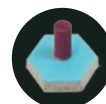
Chosei-kyu Moxa Smokeless & Fruit Fragrance

50pcs / box 1000pcs / box



Generates little smoke and has a fruit scent instead of moxa odor. During use, no ventilation is required, and curtains and clothes are free from odor.

- Smoke will disappear after it is lit
- No characteristic moxa odor
- Besides moxa, charcoal is used as heat source



Instructions for use

Warning

These products are intended to warm the body by using of a flame. Thus it may cause low temperature burn injury. The company is not responsible for any injury unless it is due to defectiveness of the product.

FIRE HAZARD: Ensure the flame is completely extinguished before disposing of the product

Precautions

Please ensure the moxa is firmly applied to the skin before lighting it. An unstable application may cause it to fall off. Please note, that even when Moxa is firmly applied, it may still fall in horizontal application.

If the skin feels too hot or uncomfortable, please remove the moxa immediately. Please be aware that the base / the paper tube of the moxa may be very hot.

The intensity of the heat generated by moxa will vary according to each person's physical condition, the

location of application and the environment. Blisters may form even if the person feels no heat. Please stop the treatment immediately if you detect any skin problems and advise the person to consult a doctor.

Contraindication

Do not use the product if the adhesive power is weakened because of aging.

Do not apply the product upside down as the combustion temperature may rise above safety limits.

Do not move moxa which is applied once to the skin. The adhesive is no longer active.

Do not use in patients who: has fever, is in pregnancy or possible pregnancy.

Do not use on: inflamed, wounded or affected area, skin grafted area, tattoos.

Do not use when: sweating, taking alcohol, feeling ill, being exhausted, taking hot bath or sauna an hour before or after.

Do not eat the product.

Stick-on Moxa

produced by  株式会社 山正 Yamasho Co., Ltd.

Tsubo-kyu Neo Next

120pcs / box

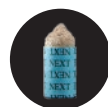
600pcs / box



Tsubo-kyu neo next provides a comfortable level of heat without the moxa directly touching the skin and burning it because the moxa is bonded to the paper tube. Smoke is also reduced and it is easy to use. Simply take a piece from the base sheet and light it.

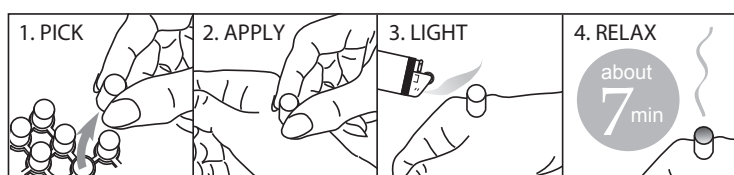


“REGULAR”



“MILD”(less heat)

- How to use -



Neo Acu-point Moxa Chang'an-DX

120pcs / box

600pcs / box



A New Type of indirect moxa-just push the moxa in the paper tube upward, and apply directly to the skin.



“REGULAR”



“MILD”(less heat)

- How to use -



1. Remove individual moxa tube.
2. Push moxa out with the rod.
3. Light moxa.

*Pay attention not to let the moxa fall after pushing out